



Best Practices for Decorative Concrete Flatwork

MasterColor coloring admixtures are suitable for cast-in-place concrete, precast concrete and manufactured concrete products, including such applications as driveways, sidewalks, pool decks, patios and architectural décor.

Ordering Decorative Concrete

- Use the same concrete mixture proportions and water-cementitious materials ratio and maintain a consistent slump throughout the project. The use of admixtures from Master Builders Solutions can improve concrete workability while maintaining lower water-cementitious materials ratios.
- Use MasterSure® Z 60 workability-retaining admixture from Master Builders Solutions to retain slump and consistency between loads, and to eliminate the need for on-site addition of water.
- To maintain color consistency, order decorative concrete in minimum 3 yd³ (2 m³) increments.
- Calcium chloride accelerators will discolor the concrete surface. Use non-chloride accelerators from Master Builders Solutions to achieve reduced concrete set time.

Placing Decorative Concrete

- Do not add water on-site to adjust slump.
- Place concrete on a well-drained subgrade that has adequate and uniform load-bearing characteristics and is thoroughly compacted and dampened.
- Place concrete close to its final position to avoid potential segregation.
- Do not place concrete over free standing water or muddy, frozen or soft spots.
- Concrete placed in the shade may display variations in color. This is normal and will diminish with time.

Finishing Decorative Concrete

- Protect the concrete surface from rapid evaporation of bleed water. Use MasterKure ER 50 evaporation reducer from Master Builders Solutions as needed.
- Texture all surfaces adequately and uniformly for slip resistance.
- Finish all surfaces consistently and at similar times after placement.
- Finish the edges first and do all handwork in the same direction.
- Do not sprinkle water or add water to the surface during finishing operations. This will lighten the surface color.
- Over-troweling or burnishing the concrete surface will cause discoloration and darkening of the surface color.

Curing Decorative Concrete

- For best results, all decorative concrete should be cured properly. Do not use plastic sheeting or water to cure decorative concrete.
- Use Master Builders Solutions' MasterKure CC 1315 water-based curing compound or other compatible curing compounds.
- Until it is completely cured, the color of concrete is normally less uniform and appears darker than the final color.
- Do not allow items to stand on the concrete during and immediately following the curing process.

Sample panels best represent the in-place appearance and are strongly recommended. These panels are the best method of ensuring that the final in-place concrete will not only be the correct color choice, but also the finish that will meet the owner's expectations. Since concrete takes 28 days to cure, reviewing sample panels prior may not represent the final cured appearance.

**Master Builders Solutions
Admixtures US, LLC**
23700 Chagrin Boulevard
Beachwood, Ohio, 44122-5544
800-628-9990

**Master Builders Solutions
Canada, Inc.**
1800 Clark Boulevard
Brampton, Ontario L6T 4M7
800-387-5862

Follow us at:     
Visit us at: www.master-builders-solutions.com/en-us
Email: admixtures@masterbuilders.com

© registered trademark of a Master Builders Solutions member in many countries of the world
© 2023 Master Builders Solutions rev 7/23 COL-BRO-0476

**MASTER®
BUILDERS
SOLUTIONS**



Color Selector

MasterColor® Coloring Admixtures for Decorative Concrete

Excellent color uniformity | Fade resistant
Beautiful, long-lasting vibrancy | Enhanced finishing characteristics



Hailstorm Gray **MC1501**



Stone Harbor **MC2501**



Mystic Shadow **MC3501**



Smokestack **MC5001**



Midnight **MC7001**



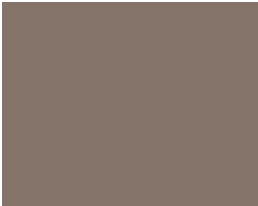
Pebble Shore **MC1502**



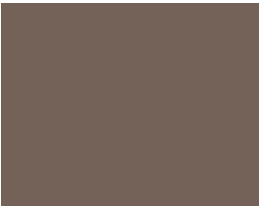
Portabella **MC2502**



English Walnut **MC3502**



Natural Bark **MC5002**



Pumpernickel **MC7002**



Light Chestnut **MC1503**



Wheat Berry **MC2503**



Deep Mauve **MC3503**



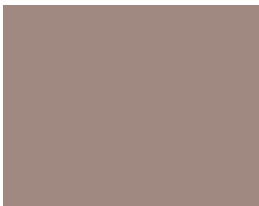
Barleywine **MC5003**



Wild Plum **MC7003**



Mountain Trail **MC1504**



Eagle's Nest **MC2504**



Maple Syrup **MC3504**



Buffalo Brown **MC5004**



Fall Buckeye **MC7004**



Hilltop Tan **MC1505**



Weathered Oak **MC2505**



Mudslide **MC3505**



Country Cabin **MC5005**



Fox Tail **MC7005**



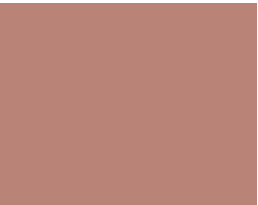
Plain concrete made with medium gray cement

Cover image: Color depicted in driveway is MasterColor Apple Cider.

** The color chips depicted in this color selector show the approximate color of broom-finished, fully cured decorative concrete flatwork made with a medium gray cement, and a 0.45 to 0.50 water-cement ratio. Decorative concrete cured with Master Builders Solutions' MasterKure® CC 1315 curing compound will be slightly darker in appearance. There are many factors that can impact the finished appearance of in-place decorative concrete. FOR PROFESSIONAL USE ONLY.*



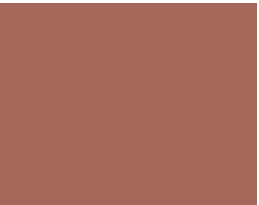
Soft Cranberry **MC1506**



Antique Rose **MC2506**



Persimmon **MC3506**



Red River Clay **MC5006**



Indiana Red **MC7006**



Gingerbread **MC1507**



Brick Oven **MC2507**



Canyon Rock **MC3507**



Tequila Sunrise **MC5007**



Firestorm **MC7007**



Warm Earth **MC1508**



Deerskin **MC2508**



Apple Cider **MC3508**



Copper Tone **MC5008**



Smoked Salmon **MC7008**



Creekside Buff **MC1509**



Sand Dune **MC2509**



Corkboard **MC3509**



Caramel **MC5009**



Bronze Medal **MC7009**



Sunset Sand **MC2512**



Champagne **MC2510**



White Tail Fawn **MC2701**



Burnt Ochre **MC3510**



Dark Gold **MC5010**



Country Stone **MC1511**



Tennessee Taupe **MC2101**



Cottage Brown **MC2511**



Spring Moss **MC1510**



Olive Branch **MC7010**

Take Concrete from Gray to Gorgeous!